



# EnkiLife TSA

## Multiple Fluorescent Staining Kit

PROMO 25%

# EnkiLife TSA Multiple Fluorescent Staining Kit

EnkiLife TSA Multiple Fluorescent Staining Kit is optimized for multiplex immunofluorescence (IF) on formalin-fixed paraffin-embedded (FFPE) sections, frozen sections, cultured cells (adherent or smear preparations), and organoid models.

The workflow is powered by tyramide signal amplification (TSA). Horseradish peroxidase (HRP) catalyzes the conversion of  $H_2O_2$  into highly reactive oxygen radicals that covalently couple fluorophore-conjugated tyramides to electron-rich amino-acid residues (Trp, His, Tyr) in the immediate vicinity of the antigen-antibody complex.

Each tyramide is labeled with a spectrally distinct, photostable fluorophore, enabling iterative cycles of antibody binding, HRP-mediated amplification, and fluorophore deposition.



# Product Advantages



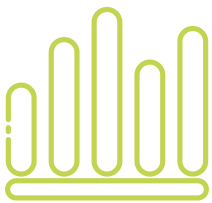
## 7-Plex Signals from a Single Slide

7 spectrally resolved TSA fluorophores (480-750 nm) for any experimental panel



## Flexible Antibody Selection

Compatible with primary antibodies from rabbit and mouse



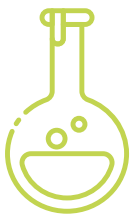
## Broad Applications

Works with FFPE sections, frozen sections, cells, and organoids



## All-in-One Components

Complete kit with tyramides, buffers, reagents, and mounting medium



## Gentle Antibody Elution

Special buffer removes antibodies while preserving antigens and tissue integrity



# PROMO 25%

## Limited-Time Promotion

SKU	Descrizione	Prezzo di Listino	Promo
RA10008-20T	3-Color Multiple Fluorescent Staining Kit (mIHC) - Size: 20T	330,00 €	247,50 €
RA10008-50T	3-Color Multiple Fluorescent Staining Kit (mIHC) - Size: 50T	660,00 €	495,00 €
RA10008-100T	3-Color Multiple Fluorescent Staining Kit (mIHC) - Size: 100T	900,00 €	675,00 €
RA10009-20T	4-Color Multiple Fluorescent Staining Kit (mIHC) - Size: 20T	380,00 €	285,00 €
RA10009-50T	4-Color Multiple Fluorescent Staining Kit (mIHC) - Size: 50T	780,00 €	585,00 €
RA10009-100T	4-Color Multiple Fluorescent Staining Kit (mIHC) - Size: 100T	1.160,00 €	870,00 €
RA10010-20T	5-Color Multiple Fluorescent Staining Kit (mIHC) - Size: 20T	540,00 €	405,00 €
RA10010-50T	5-Color Multiple Fluorescent Staining Kit (mIHC) - Size: 50T	1.080,00 €	810,00 €
RA10010-100T	5-Color Multiple Fluorescent Staining Kit (mIHC) - Size: 100T	1.860,00 €	1.395,00 €
RA10011-20T	6-Color Multiple Fluorescent Staining Kit (mIHC) - Size: 20T	720,00 €	540,00 €
RA10011-50T	6-Color Multiple Fluorescent Staining Kit (mIHC) - Size: 50T	1.430,00 €	1.072,50 €
RA10011-100T	6-Color Multiple Fluorescent Staining Kit (mIHC) - Size: 100T	2.400,00 €	1.800,00 €
RA10012-20T	7-Color Multiple Fluorescent Staining Kit (mIHC) - Size: 20T	980,00 €	735,00 €
RA10012-50T	7-Color Multiple Fluorescent Staining Kit (mIHC) - Size: 50T	1.960,00 €	1.470,00 €
RA10012-100T	7-Color Multiple Fluorescent Staining Kit (mIHC) - Size: 100T	3.280,00 €	2.460,00 €



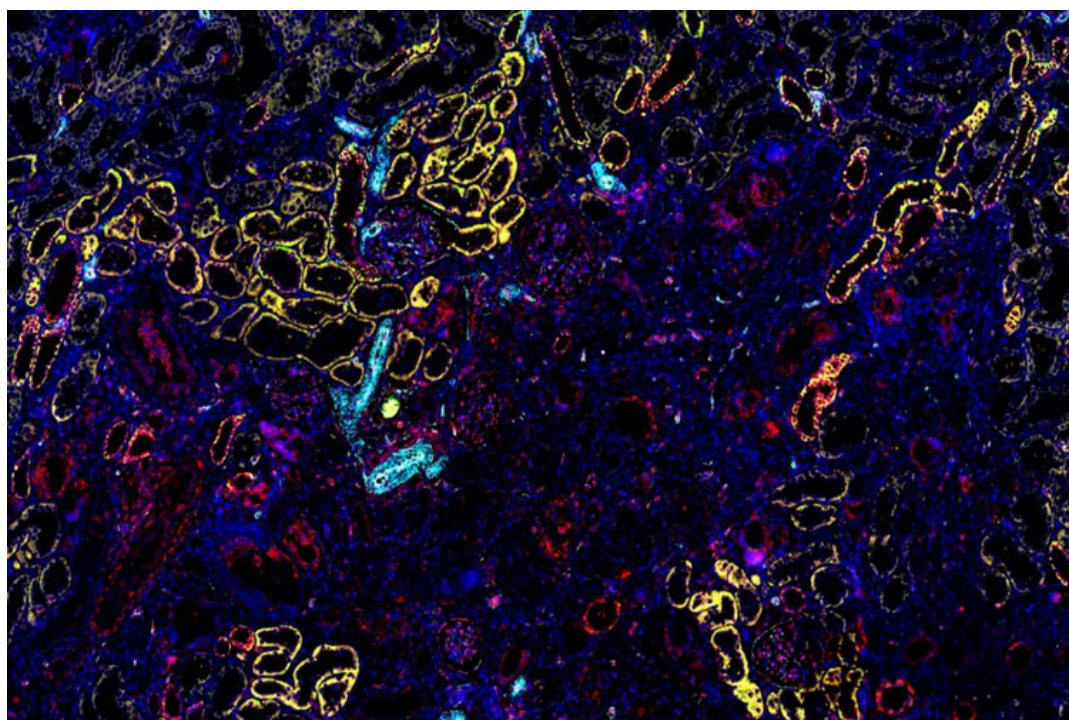
# 7-Color Multiple Fluorescent Staining Kit (mIHC)

## Components and Dilutions

Components	TSA-CY3	TSA-FITC	TSA-680	TSA-430	TSA-594	TSA-CY7	TSA diluent	3% H <sub>2</sub> O <sub>2</sub>
Dilutions	1:200	1:200	1:200	1:200	1:200	1:200	Ready-to-use	Ready-to-use

Components	Blocking solution	Primary antibody diluent	Antibody elution reagent	HRP-goat anti-rabbit/mouse IgG	DAPI staining	Anti-fluorescence fading mounting medium
Dilutions	Ready-to-use	Ready-to-use	Ready-to-use	Ready-to-use	Ready-to-use	Ready-to-use

## Illustrative Images



### Test Sample: Rat kidney

#### AQP4

Positive staining is evident in principal cells of the inner-medullary collecting ducts as well as in cortical and outer-medullary collecting ducts.

#### CD31

Widely used for labeling vascular endothelium; expressed in glomerular capillary endothelium and vessels at all hierarchical levels.

#### TGFβ1

Expression is markedly up-regulated in hypertension and fibrosis models; detected in glomerular epithelial cells (primarily podocytes) and interstitial fibroblasts.

#### Zo-1

As a scaffolding protein of tight junctions, it preserves the glomerular filtration barrier and tubular epithelial polarity.

#### Collagen I

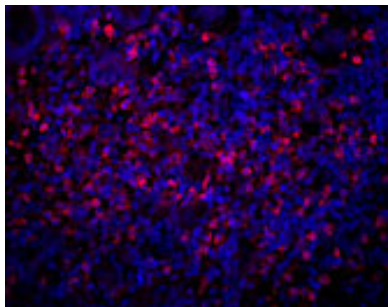
In fibrotic or sclerotic models, it extensively accumulates in the interstitium and glomeruli.



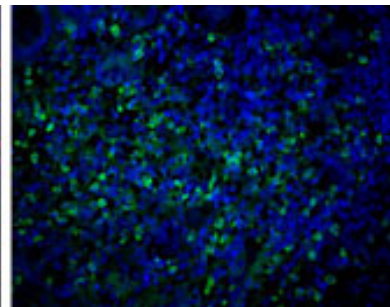
Target	Fluorescein	Ex (nm)	Em (nm)	Filters	Image Color
AQP4	TSA-430	430nm	480nm	Aqua channel	Yellow
CD31	TSA-FITC	490nm	520nm	FITC channel	Green
TGFβ1	TSA-CY3	550nm	570nm	CY3 channel	Red
ZO-1	TSA-594	590nm	620nm	Red channel	Cyan
Collagen I	TSA-680	680nm	700nm	CY5/CY5.5 channel	Purple

## CASE STUDY | Customer Testimonial

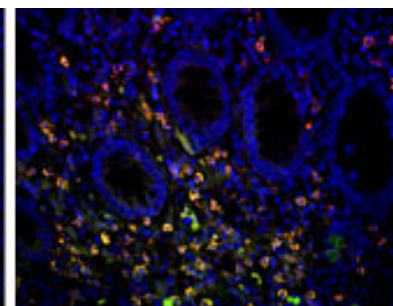
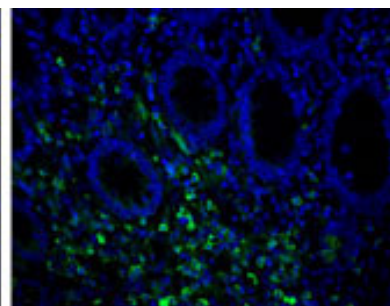
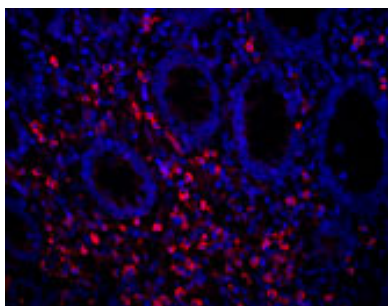
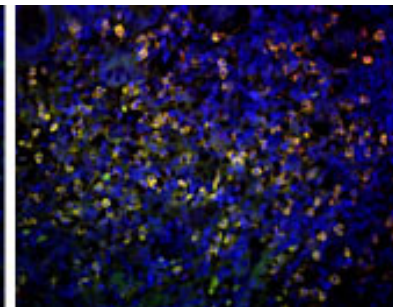
CD19/DAPI



CD20/DAPI



Merge



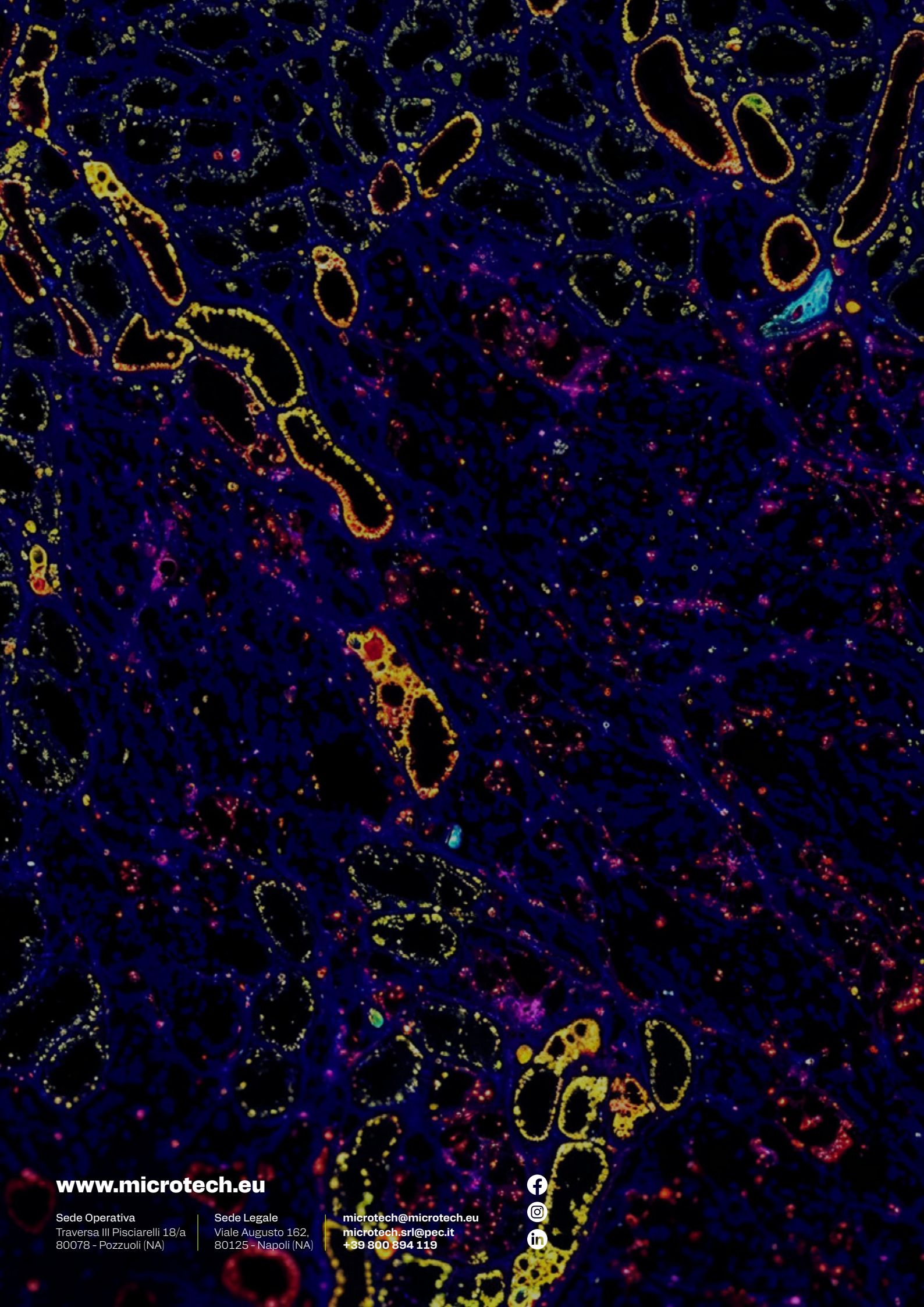
The test was performed on a patient sample. Lung tissue. Two anti-mouse antibodies were used using TSA Multiple Fluorescent Staining technology. The signal was specific and clear.

Dott.ssa Federica Pisati

**cogentech**  
CONSORTIUM FOR GENOMIC TECHNOLOGIES

[www.microtech.eu](http://www.microtech.eu)





**[www.microtech.eu](http://www.microtech.eu)**

Sede Operativa  
Traversa III Pisciarelli 18/a  
80078 - Pozzuoli (NA)

Sede Legale  
Viale Augusto 162,  
80125 - Napoli (NA)

[microtech@microtech.eu](mailto:microtech@microtech.eu)  
[microtech.srl@pec.it](mailto:microtech.srl@pec.it)  
**+39 800 894 119**

