



EnkiLife TSA

Multiple Fluorescent Staining Kit

PROMO 25%

EnkiLife TSA Multiple Fluorescent Staining Kit

EnkiLife TSA Multiple Fluorescent Staining Kit is optimized for multiplex immunofluorescence (IF) on formalin-fixed paraffin-embedded (FFPE) sections, frozen sections, cultured cells (adherent or smear preparations), and organoid models.

The workflow is powered by tyramide signal amplification (TSA). Horseradish peroxidase (HRP) catalyzes the conversion of H_2O_2 into highly reactive oxygen radicals that covalently couple fluorophore-conjugated tyramides to electron-rich amino-acid residues (Trp, His, Tyr) in the immediate vicinity of the antigen-antibody complex.

Each tyramide is labeled with a spectrally distinct, photostable fluorophore, enabling iterative cycles of antibody binding, HRP-mediated amplification, and fluorophore deposition.



Product Advantages



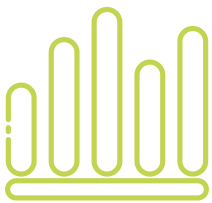
7-Plex Signals from a Single Slide

7 spectrally resolved TSA fluorophores (480-750 nm) for any experimental panel



Flexible Antibody Selection

Compatible with primary antibodies from rabbit and mouse



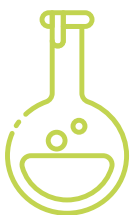
Broad Applications

Works with FFPE sections, frozen sections, cells, and organoids



All-in-One Components

Complete kit with tyramides, buffers, reagents, and mounting medium



Gentle Antibody Elution

Special buffer removes antibodies while preserving antigens and tissue integrity



PROMO 25%

Limited-Time Promotion

SKU	Descrizione	Prezzo di Listino	Promo
RA10008-20T	3-Color Multiple Fluorescent Staining Kit (mIHC) - Size: 20T	330,00 €	247,50 €
RA10008-50T	3-Color Multiple Fluorescent Staining Kit (mIHC) - Size: 50T	660,00 €	495,00 €
RA10008-100T	3-Color Multiple Fluorescent Staining Kit (mIHC) - Size: 100T	900,00 €	675,00 €
RA10009-20T	4-Color Multiple Fluorescent Staining Kit (mIHC) - Size: 20T	380,00 €	285,00 €
RA10009-50T	4-Color Multiple Fluorescent Staining Kit (mIHC) - Size: 50T	780,00 €	585,00 €
RA10009-100T	4-Color Multiple Fluorescent Staining Kit (mIHC) - Size: 100T	1.160,00 €	870,00 €
RA10010-20T	5-Color Multiple Fluorescent Staining Kit (mIHC) - Size: 20T	540,00 €	405,00 €
RA10010-50T	5-Color Multiple Fluorescent Staining Kit (mIHC) - Size: 50T	1.080,00 €	810,00 €
RA10010-100T	5-Color Multiple Fluorescent Staining Kit (mIHC) - Size: 100T	1.860,00 €	1.395,00 €
RA10011-20T	6-Color Multiple Fluorescent Staining Kit (mIHC) - Size: 20T	720,00 €	540,00 €
RA10011-50T	6-Color Multiple Fluorescent Staining Kit (mIHC) - Size: 50T	1.430,00 €	1.072,50 €
RA10011-100T	6-Color Multiple Fluorescent Staining Kit (mIHC) - Size: 100T	2.400,00 €	1.800,00 €
RA10012-20T	7-Color Multiple Fluorescent Staining Kit (mIHC) - Size: 20T	980,00 €	735,00 €
RA10012-50T	7-Color Multiple Fluorescent Staining Kit (mIHC) - Size: 50T	1.960,00 €	1.470,00 €
RA10012-100T	7-Color Multiple Fluorescent Staining Kit (mIHC) - Size: 100T	3.280,00 €	2.460,00 €



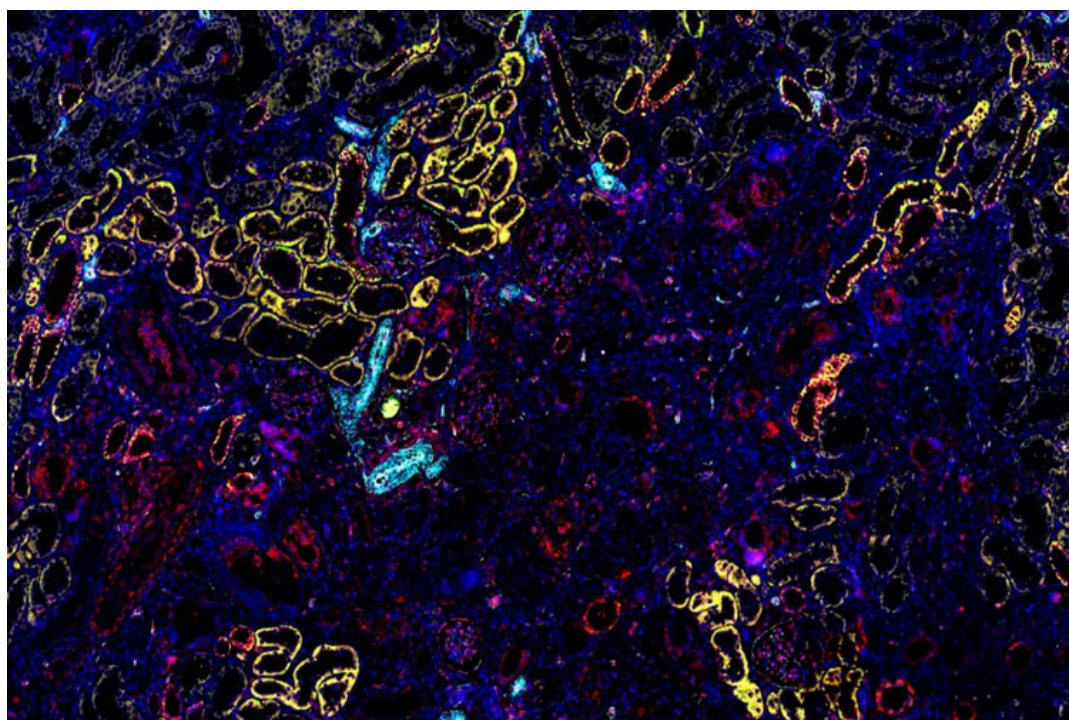
7-Color Multiple Fluorescent Staining Kit (mIHC)

Components and Dilutions

Components	TSA-CY3	TSA-FITC	TSA-680	TSA-430	TSA-594	TSA-CY7	TSA diluent	3% H ₂ O ₂
Dilutions	1:200	1:200	1:200	1:200	1:200	1:200	Ready-to-use	Ready-to-use

Components	Blocking solution	Primary antibody diluent	Antibody elution reagent	HRP-goat anti-rabbit/mouse IgG	DAPI staining	Anti-fluorescence fading mounting medium
Dilutions	Ready-to-use	Ready-to-use	Ready-to-use	Ready-to-use	Ready-to-use	Ready-to-use

Illustrative Images



Test Sample: Rat kidney

AQP4

Positive staining is evident in principal cells of the inner-medullary collecting ducts as well as in cortical and outer-medullary collecting ducts.

CD31

Widely used for labeling vascular endothelium; expressed in glomerular capillary endothelium and vessels at all hierarchical levels.

TGFβ1

Expression is markedly up-regulated in hypertension and fibrosis models; detected in glomerular epithelial cells (primarily podocytes) and interstitial fibroblasts.

Zo-1

As a scaffolding protein of tight junctions, it preserves the glomerular filtration barrier and tubular epithelial polarity.

Collagen I

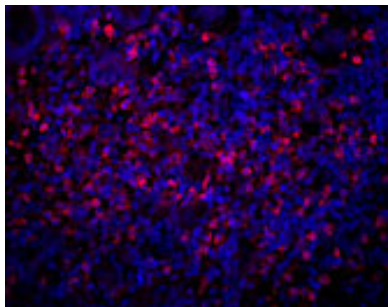
In fibrotic or sclerotic models, it extensively accumulates in the interstitium and glomeruli.



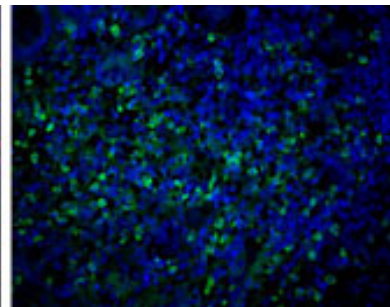
Target	Fluorescein	Ex (nm)	Em (nm)	Filters	Image Color
AQP4	TSA-430	430nm	480nm	Aqua channel	Yellow
CD31	TSA-FITC	490nm	520nm	FITC channel	Green
TGFβ1	TSA-CY3	550nm	570nm	CY3 channel	Red
Zo-1	TSA-594	590nm	620nm	Red channel	Cyan
Collagen I	TSA-680	680nm	700nm	CY5/CY5.5 channel	Purple

CASE STUDY | Customer Testimonial

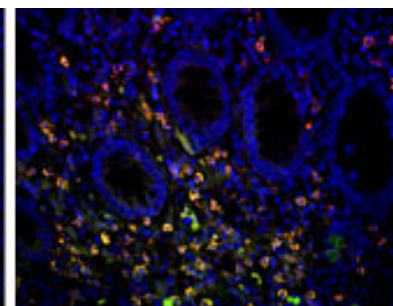
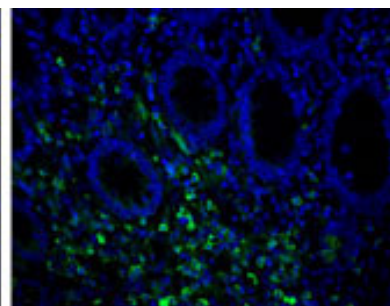
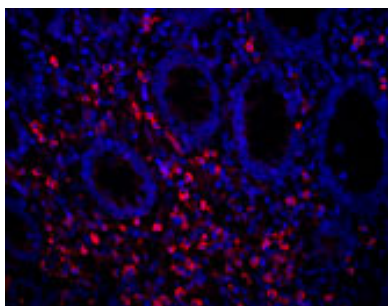
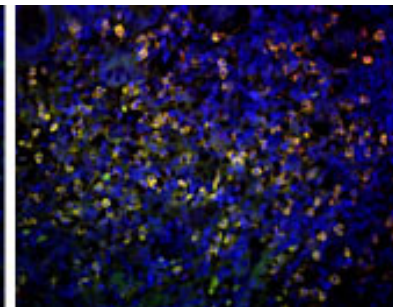
CD19/DAPI



CD20/DAPI



Merge



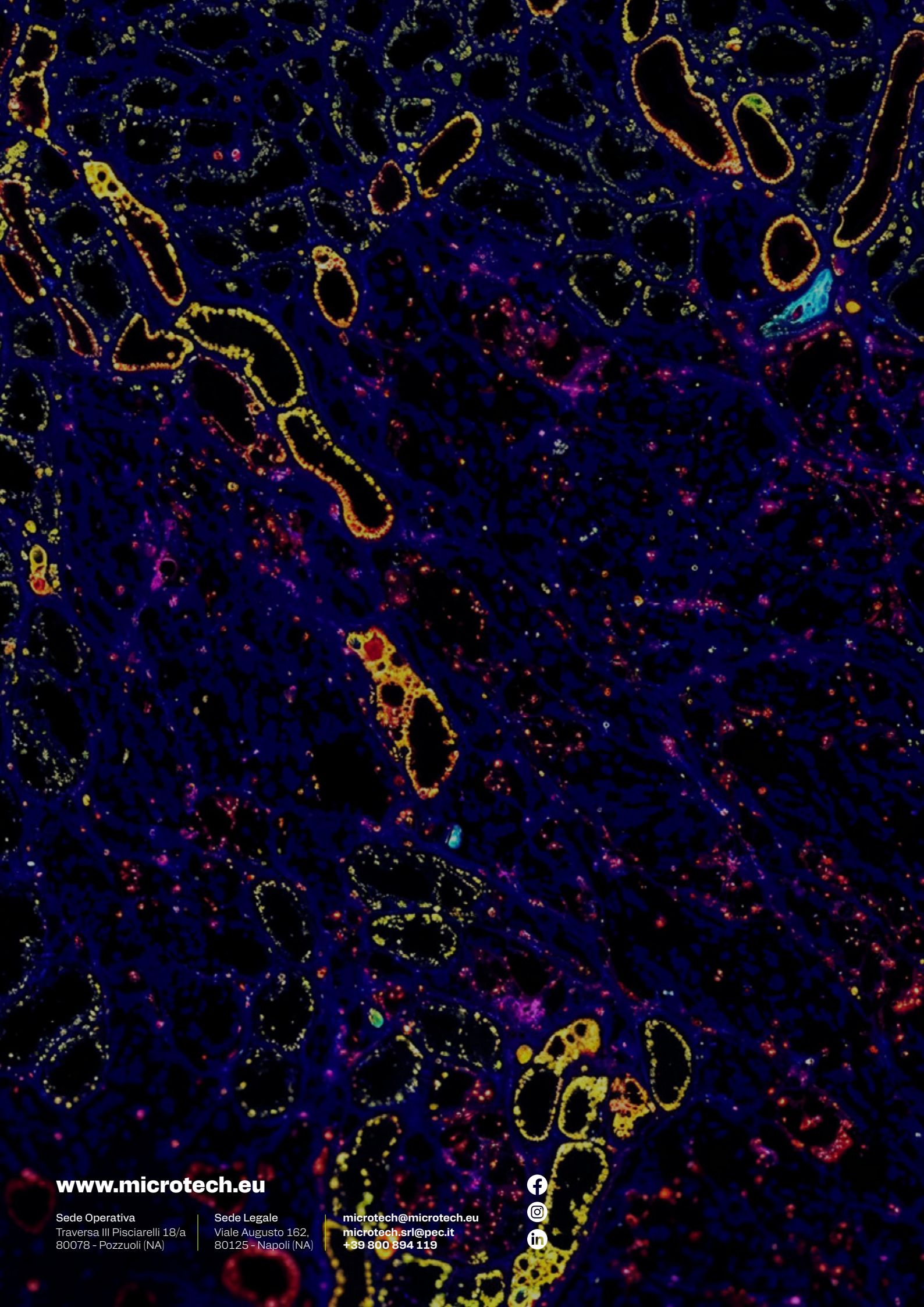
The test was performed on a patient sample. Lung tissue. Two anti-mouse antibodies were used using TSA Multiple Fluorescent Staining technology. The signal was specific and clear.

Dott.ssa Federica Pisati

cogentech
CONSORTIUM FOR GENOMIC TECHNOLOGIES

www.microtech.eu





www.microtech.eu

Sede Operativa
Traversa III Pisciarelli 18/a
80078 - Pozzuoli (NA)

Sede Legale
Viale Augusto 162,
80125 - Napoli (NA)

microtech@microtech.eu
microtech.srl@pec.it
+39 800 894 119

