

ROS Detection Kits



Enhanced Sensitivity. Dependable Detection.

Overcoming the Challenges of ROS Detection

The fluorescent probe DCFH-DA is commonly used in ROS detection methods.

However, it has several limitations, such as weak intracellular fluorescence, dye leakage, and photo-oxidation during observation.

Dojindo's Total ROS Detection Kits overcome these issues with enhanced sensitivity and dependable results, making ROS analysis easier and more accurate with a probe based on the DCFH-DA principle, optimized for improved performance.



PROMOTION

ROS Detection Kits

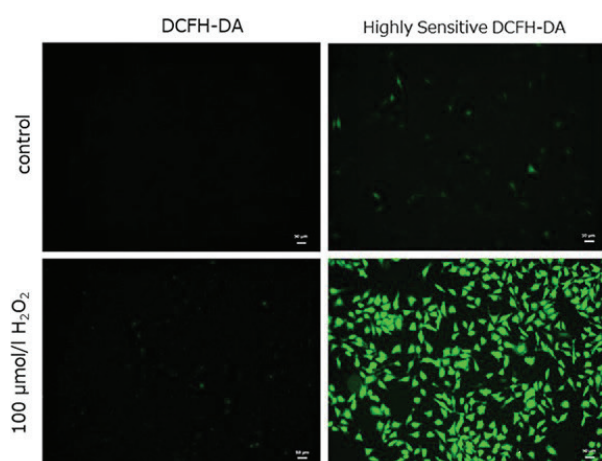
PROMO 55%

From 15/01/2026 to 30/04/2026

Code	Product Name	Unit	List Price	Net Price
MT16-10	MitoBright ROS Deep Red - Mitochondrial Superoxide Detection	100 nmol x 1	364 €	164 €
MT16-12	MitoBright ROS Deep Red - Mitochondrial Superoxide Detection	100 nmol x 3	812 €	366 €
R252-10	ROS Assay Kit -Highly Sensitive DCFH-DA-	100 tests	660 €	298 €
R253-10	ROS Assay Kit -Photo-oxidation Resistant DCFH-DA-	100 tests	1004 €	452 €

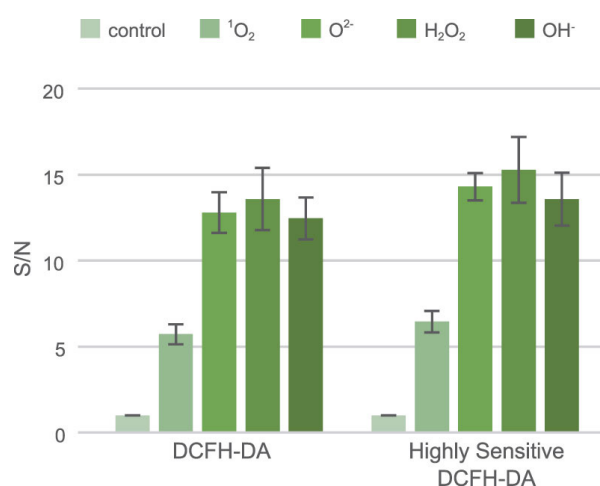
ROS Assay Kit - Highly Sensitive DCFH-DA-

High sensitivity to ROS



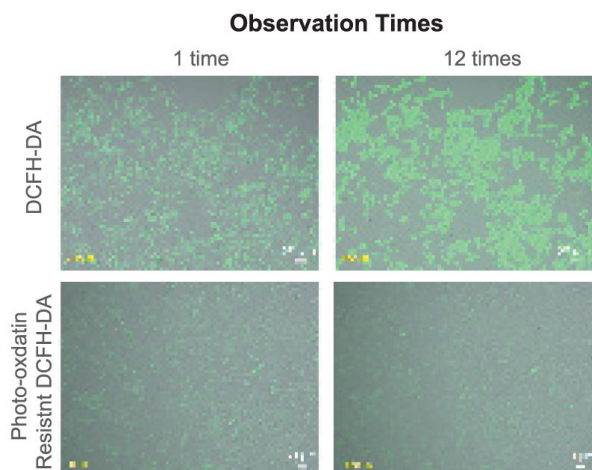
Detection conditions
Ex. 488 nm / Em. 500 - 560 nm
Cell type:HeLa cells (scale bar: 50 μm)

Reactivity Compared with Existing DCFH-DA

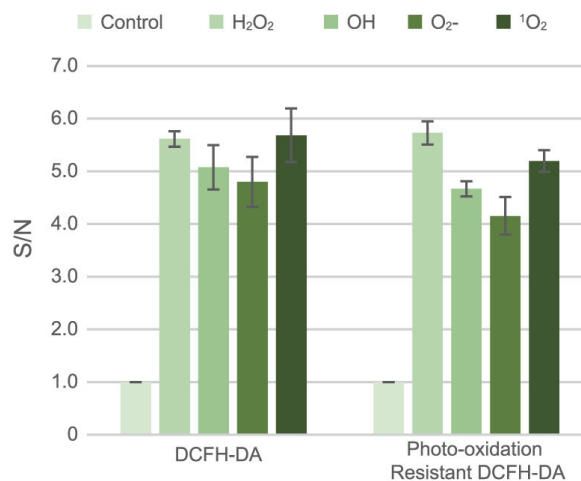


ROS Assay Kit -Photo-oxidation Resistant DCFH-DA-

Resistance to Photo-oxidation



Reactivity Compared with Existing DCFH-DA



Comparison

	Highly Sensitive DCFH-DA	Photo-oxidation Resistant DCFH-DA	Company T Probe D	Company T Probe C
Unit	100 tests	100 tests	100 mg	250 µL
Sensitivity	● ● ● ● ●	● ● ● ● ●	● ● ● ●	● ● ● ●
Photo-oxidation Resistance	-	● ● ● ● ●	-	-
Cell Fixation	-	● ● ● ● ●	-	● ● ● ●



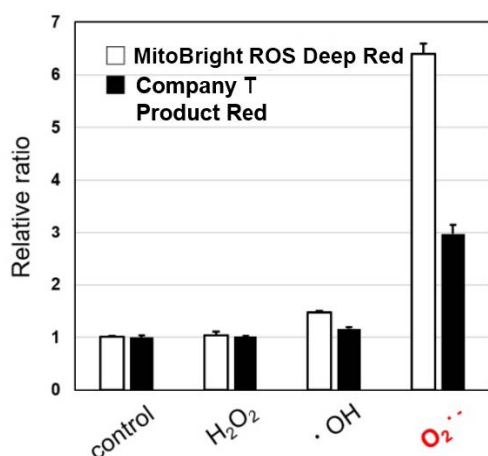
ROS x Mitochondria: Superoxide Detection

MitoBright ROS Deep Red Mitochondrial Superoxide Detection

MitoBright ROS Deep Red enables sensitive detection of mitochondrial superoxide in live cells with long-wavelength fluorescence (Ex/Em: 540/670 nm).

This probe offers high selectivity for superoxide and can be co-stained with commonly used green or red fluorescent probes, providing flexibility for observation across various experimental setups.

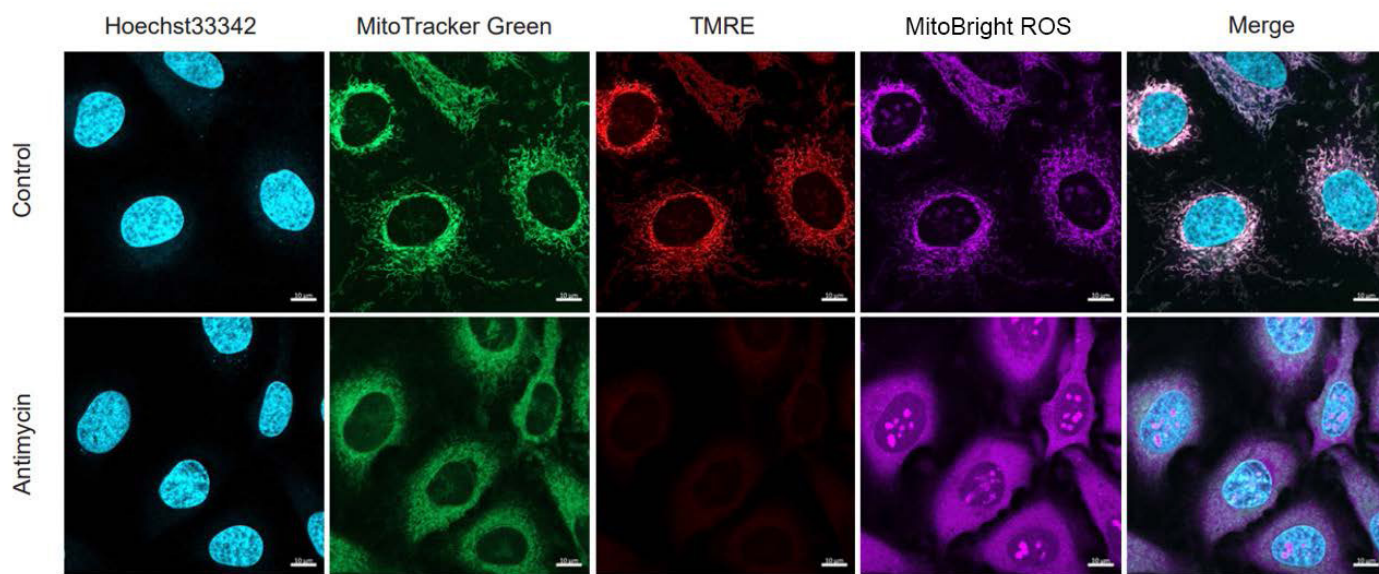
Comparison with the competitor's product



	Dojindo - MitoBright ROS Deep Red	Company T'sw Product Red
Storage	0-5°C	-5°C to -25°C
Detection	Live cells	Live cells
Excitation/Emission	540/670 nm	510/580 nm
Compatible Machines	FCM, Plate Reader Microscope	FCM, Microscope
Fixation after staining	N/A	N/A



Multi-color staining with various reagents



(Blue) Nucleus: Hoechst33342 (Ex=405, Em=450-495 nm)

(Green) Mitochondrial Mass: MitoTrackerTM Green FM (Ex=488 nm, Em=500-550 nm)

(Red) Mitochondrial Membrane Potential: TMRE (Ex=561 nm, Em=560-620 nm)

(Deep Red) Mitochondrial Superoxide: MitoBright ROS Deep Red (Ex=633 nm, Em=640-700 nm)

Scale bar: 10 µm

www.microtech.eu

Sede Operativa
Traversa III Pisciarelli 18/a
80078 - Pozzuoli (NA)

Sede Legale
Viale Augusto 162,
80125 - Napoli (NA)

microtech@microtech.eu
microtech.srl@pec.it
+39 800 894 119

