

ELISA Kits


MICROTECH
LA SCELTA LOGICA

PROMOTION



Buy three ELISA kits
and choose one product for free

3 Elisa + Gift = 1.335,00€ (445,00€ / Elisa)



Nr. 1 PIPETMAN®
Gilson Metal Ejector



Nr. 4 HiPette Fully
Autoclavable Mechanical
Pipette



MicroPette Plus 8-channel
Adjustable Volume
Mechanical Pipettes
(magnetic suction model)



Nr. 1 D1012UA High Speed
Micro Centrifuges



Nr. 1 MX-S Variable speed
Vortex Mixer



Nr. 1 SK-R1807-S Intelligent
Transference Decolorizing
Shaker



Unlock a Free Analyzer with Your ELISA Kit Order

Upgrade your equipment with the purchase of 25 ELISA kits totaling €11,125 (with the option of split deliveries), your lab will receive a BGMR-1000 enzyme immunoassay analyzer — worth €4,430 — completely free.



25 ELISA KITS. Get the Analyzer for Free!

The BGMR-1000 is a next-generation instrument designed to deliver fast, precise, and reliable immunoassay readings, featuring a user-friendly touch screen interface and reduced read times for 96-well plates.

Don't miss this opportunity to upgrade your lab equipment at no extra cost. Advanced technology comes with your next order!



PROMOTION

Enzyme Immunoassay Analyzer with Baiheng Technology

The BGMR-1000 is an enzyme immunoassay analyzer developed by Hangzhou Baiheng Technology Co., Ltd.

This product utilizes the photoelectric colorimetric method for enzyme-linked immunosorbent assay (ELISA) of samples, with a detection wavelength range of 400–750 nm. It is suitable for various applications, including kinetic enzyme research. The instrument delivers fast and accurate measurements, with single-wavelength readings completed in just 6 seconds per 96-well plate, and dual-wavelength readings in 10 seconds per 96-well plate.



Product Model	BGMR-1000
Light Source	Long-life halogen lamp 6V10W
Wavelength Range	340–750 nm
Filters	Four standard filters at 405, 450, 492, and 630 nm; supports up to eight filters
Filter Bandwidth	6–8 nm
Absorbance Range	0.000–4.000 OD
Resolution	0.001 OD
Linearity	Correlation coefficient > 0.999 (0–2.0), > 0.99 (2.0–4.0)
Wavelength Indication Error	≤±3 nm
Wavelength Repeatability	≤±1.5 nm
Repeatability	≤0.3% (0–3.0), ≤2% (3.0–4.0)
Stability	≤0.3% (0–3.0), ≤2% (3.0–4.0)
Accuracy	≤±0.005 OD (0–2.0), ≤±1% (2.0–3.0), ≤±1.5% (3.0–4.0)
Sensitivity	Sensitivity ≥ 0.010 OD
Channel Difference	<0.01 OD (standard filter at 1.0 OD)
Measurement Speed	6 sec/96 wells (single wavelength), 10 sec/96 wells (dual wavelength)
Shaking Plate	3 speeds (high, medium, low)
Temperature Range	Ambient temperature +5°C to 85°C
Control Method	10.1-inch high-resolution color touchscreen with built-in software
Data Export Format	excel, txt, pdf
Printing	Direct report printing (optional USB thermal printer)
Interface Mode	2 USB Type-A ports, 1 Ethernet port
Dimensions	300 x 470 x 200 mm
Net Weight (kg)	13



ELISA Kits

Focus on Developing and Manufacturing ELISA Assay Kits Over 14 Years. Set for your Academic Research.

If you encounter any of the following problems during your experiment, it's time to try Elabscience® high sensitivity and specificity ELISA assays.

- **Can't find reliable reagents and assays?**
- **Want to complete the test with more convenient operation and less time?**
- **Try to detect the target with a smaller sample size?**

High-quality optimized **Elabscience® ELISA Kits** enable you to detect specific targets with confidence, reliability, and consistency.

You can opt for our **QuickKey Pro™ ELISA Kits** to complete the entire experiment in **90 min.**

Alternatively, you can also choose **Mini Sample ELISA Kits**, part of our new serie specially designed for mouse item detection, which reduces the sample volume to **only 25 µL.**

Elabscience® products have contributed to researchers publish **over 21,218 papers in SCI journals**, with the highest impact factor reaching up to **105,612.1.**

Now, you can purchase ELISA kits online or contact our distributors of Elabscience® all around the world.

Product Categories



QuickKey Pro™ ELISA Kits

One step, complete assay in 90 min



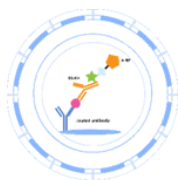
Mini Sample ELISA Kits

Less sample, only need 25 µL



High Sensivity ELISA Kits

Protein concentration at Fg level can be detected



Traditional ELISA Kits

Various protein targets



SARS-CoV-2 ELISA Kits

Apply to detect SARS-CoV-2 antigen/antibody



Uncoated ELISA Kits

Cost-Effective, save on budget by coating the Micro ELISA pre-Plate by yourself



Product Comparison

Items	Traditional ELISA Kits		Quickey Pro™ ELISA Kits		Mini Sample ELISA Kits	High Sensitivity ELISA Kits
Product Feature	Various Protein Targets		Minimum Experiment Time		Less Sample Volume	Highest Sensitivity
Detection Method	Sandwich	Competitive	Sandwich	Competitive	Sandwich	Sandwich
Sample Volume	100 µL	50 µL	50 µL		25 µL	100 µL
Operation Time	3.5 h	2.5 h	90 min		3.5 h	3.5 h
Operation Steps	3 Steps	2 Steps	1 Step		3 Steps	3 Steps
Sensitivity	pg/mL		pg/mL		pg/mL	fg/mL
Storage	2-8° C		2-8° C		2-8° C	2-8° C

Research Areas



Cancer

αFP - PSA - CA125
VEGF-A - CEA



Immunology

IgG - IL-1β - IL-6
TGF-β1 - TNF-α



Neuroscience

Aβ1-40 - Aβ1-42
DA - MAPT - 5-HT



Stem Cells

BMP-2 - Cys-C
S100B - SCF - TGF-β2



Cardiovascular

ADP - ApoE - Cys-C
D2D - ACE



Metabolism

C-P - CRP - LEP
RETN - INS



Microbiology

DEFB1 - DEFB2
LBP - ELA2 - SIRT1



Cell Biology

BAFF - CASP1 - EGF
FAS - PD-L1



Signaling Transduction

ANP - mTOR - APLN
β-EP - NFKB-p105



Developmental Biology

AMH - IGF-1 - Klotho
NEFL - VEGF-A



Epigenetics and Nuclear Signaling

HMGB-1 - HO1
NES1 - PKM2
PPAR-γ



Tags and Cell Markers

CEA - MBP - MUC2
PSA - SIRT1



Publications

Elabscience® products have been cited in over 21,218 papers published by SCI journals, the total impact factor has been over 105,612.1 of those papers using our products, covering many top journals in biology research, such as **Nature Medicine, Nature, Cell, Immunity, Molecular Cancer, Circulation, Advanced Materials**, etc.

Top 200 Hot-Selling ELISA Kits - Elabscience

To help researchers better conduct their experiments, we have compiled the top 200 most popular **ELISA kits** used in scientific research.

These targets cover more than 10 hot research areas, such as **cancer, immunology, cardiovascular, metabolism, neuroscience, stem cells, microbiology, cell biology, signal transduction, and epigenetics & nuclear signaling**, it makes your experiments more efficient!

Research Areas	Cat. No.	Product Name
Cancer	E-EL-H3640	Human EPO (Erythropoietin) ELISA Kit
	E-EL-H0168	Human FE (Ferritin) ELISA Kit
	E-EL-H1863	Human HSP-70/HSPA9 (Heat Shock 70 kDa Protein 9) ELISA Kit
	E-EL-H1446	Human MMP-3 (Matrix Metalloproteinase 3) ELISA Kit
	E-EL-H1450	Human MMP-8 (Matrix Metalloproteinase 8) ELISA Kit
	E-EL-H6075	Human MMP-9 (Matrix Metalloproteinase 9) ELISA Kit
	E-EL-H0616	Human MUC1 (Mucin 1) ELISA Kit
	E-EL-H2279	Human MUC5AC (Mucin 5 Subtype AC) ELISA Kit
	E-EL-H1547	Human PD-L1 (Programmed Cell Death Protein 1 Ligand 1) ELISA Kit
	E-EL-H2584	Human suPAR (Soluble Urokinase-type Plasminogen Activator Receptor) ELISA Kit
	E-EL-H0184	Human TIMP-1 (Tissue Inhibitors of Metalloproteinase 1) ELISA Kit
	E-EL-H0111	Human VEGF-A (Vascular Endothelial Cell Growth Factor A) ELISA Kit
	E-EL-M1292	Mouse VEGF-A (Vascular Endothelial Cell Growth Factor A) ELISA Kit
Cardiovascular	E-EL-H0281	Human ACE2 (Angiotensin Converting Enzyme 2) ELISA Kit
	E-EL-M0002	Mouse ADP/Acrp30 (Adiponectin) ELISA Kit
	E-EL-R3012	Rat ADP/Acrp30 (Adiponectin) ELISA Kit
	E-EL-H6084	Human ApoB48 (Apolipoprotein B48) ELISA Kit
	E-EL-H0470	Human ApoE (Apolipoprotein E) ELISA Kit
	E-EL-M0355	Mouse CKMB (Creatine Kinase MB Isoenzyme) ELISA Kit
	E-EL-M0340	Mouse CTGF (Connective Tissue Growth Factor) ELISA Kit
	E-EL-H3643	Human Cys-C (Cystatin C) ELISA Kit
	E-EL-H6145	Human D2D (D-Dimer) ELISA Kit
	E-EL-H0064	Human ET-1 (Endothelin 1) ELISA Kit



Research Areas	Cat. No.	Product Name
Cardiovascular	E-EL-H0760	Human F9(Coagulation Factor IX) ELISA Kit
	E-EL-H6025	Human GLP-1(Glucagon Like Peptide 1) ELISA Kit
	E-EL-H2364	Human HS(Heparan Sulfate) ELISA Kit
	E-EL-H1577	Human PDGF-BB(Platelet Derived Growth Factor BB) ELISA Kit
	E-EL-H1555	Human PGF(Placental Growth Factor) ELISA Kit
	E-EL-H5442	Human PIVKA- (Protein Induced by Vitamin K Absence or Antagonist-) ELISA Kit
	E-EL-H6082	Human sST2(Soluble ST2) ELISA Kit
	E-EL-M1203	Mouse TNNI3/cTn-I(Troponin I Type 3, Cardiac) ELISA Kit
	E-EL-R1253	Rat TNNI3/cTn-I(Troponin I Type 3, Cardiac) ELISA Kit
	E-EL-H2168	Human VWF(Von Willebrand Factor) ELISA Kit
	E-EL-M1247	Mouse VWF(Von Willebrand Factor) ELISA Kit
	E-EL-R1079	Rat VWF(Von Willebrand Factor) ELISA Kit
	E-EL-H5560	Human Zonulin ELISA Kit
Immunology	E-EL-H0818	Human C3a (Complement Component 3a) ELISA Kit
	E-EL-M0337	Mouse C3a (Complement Component 3a) ELISA Kit
	E-EL-R0255	Rat C3a (Complement Component 3a) ELISA Kit
	E-EL-H0190	Human C5a (Complement Component 5a) ELISA Kit
	E-EL-H0043	Human CRP (C-Reactive Protein) ELISA Kit
	E-EL-M0053	Mouse CRP (C-Reactive Protein) ELISA Kit
	E-EL-R0506	Rat CRP (C-Reactive Protein) ELISA Kit
	E-EL-H1745	Human Fc γ (Fc Fragment of IgG) ELISA Kit
	E-EL-H0075	Human Flt3L (FMS-like Tyrosine Kinase 3 Ligand) ELISA Kit
	E-EL-H1617	Human GzmB (Granzyme B) ELISA Kit
	E-EL-H5134	Human hs-CRP (high-sensitivity C-Reactive Protein) ELISA Kit
	E-EL-H2162	Human IDO (Indoleamine-2,3-Dioxygenase) ELISA Kit
	E-EL-H0085	Human IFN- β (Interferon Beta) ELISA Kit
	E-EL-M0033	Mouse IFN- β (Interferon Beta) ELISA Kit
	E-EL-H0108	Human IFN- γ (Interferon Gamma) ELISA Kit
	E-EL-M0048	Mouse IFN- γ (Interferon Gamma) ELISA Kit
	E-EL-R0009	Rat IFN- γ (Interferon Gamma) ELISA Kit
	E-EL-M0690	Mouse IgA (Immunoglobulin A) ELISA Kit
	E-EL-M3034	Mouse IgE (Immunoglobulin E) ELISA Kit
	E-EL-H0169	Human IgG (Immunoglobulin G) ELISA Kit



Research Areas	Cat. No.	Product Name
Immunology	E-EL-M0692	Mouse IgG(Immunoglobulin G) ELISA Kit
	E-EL-R0518	Rat IgG(Immunoglobulin G) ELISA Kit
	E-EL-M3036	Mouse IgM(Immunoglobulin M) ELISA Kit
	E-EL-H0088	Human IL-1 α (Interleukin 1 Alpha) ELISA Kit
	E-EL-H0149	Human IL-1 β (Interleukin 1 Beta) ELISA Kit
	E-EL-M0037	Mouse IL-1 β (Interleukin 1 Beta) ELISA Kit
	E-EL-R0012	Rat IL-1 β (Interleukin 1 Beta) ELISA Kit
	E-EL-H0099	Human IL-2(Interleukin 2) ELISA Kit
	E-EL-M0042	Mouse IL-2(Interleukin 2) ELISA Kit
	E-EL-R0013	Rat IL-2(Interleukin 2) ELISA Kit
	E-EL-H0101	Human IL-4(Interleukin 4) ELISA Kit
	E-EL-M0043	Mouse IL-4(Interleukin 4) ELISA Kit
	E-EL-R0014	Rat IL-4(Interleukin 4) ELISA Kit
	E-EL-M0722	Mouse IL-5(Interleukin 5) ELISA Kit
	E-EL-H6156	Human IL-6(Interleukin 6) ELISA Kit
	E-EL-M0044	Mouse IL-6(Interleukin 6) ELISA Kit
	E-EL-R0015	Rat IL-6(Interleukin 6) ELISA Kit
	E-EL-H6008	Human IL-8(Interleukin 8) ELISA Kit
	E-EL-H6154	Human IL-10(Interleukin 10)ELISA Kit
	E-EL-M0046	Mouse IL-10(Interleukin 10) ELISA Kit
	E-EL-R0016	Rat IL-10(Interleukin 10) ELISA Kit
	E-EL-M3062	Mouse IL-12(Interleukin 12) ELISA Kit
	E-EL-H0105	Human IL-17A(Interleukin 17A) ELISA Kit
	E-EL-M0047	Mouse IL-17A(Interleukin 17A) ELISA Kit
	E-EL-H0253	Human IL-18(Interleukin 18) ELISA Kit
	E-EL-M0730	Mouse IL-18(Interleukin 18) ELISA Kit
	E-EL-R0567	Rat IL-18(Interleukin 18) ELISA Kit
	E-EL-H0107	Human IL-23(Interleukin 23) ELISA Kit
	E-EL-M0731	Mouse IL-23(Interleukin 23) ELISA Kit
	E-EL-H2402	Human IL-33(Interleukin 33) ELISA Kit
	E-EL-H2443	Human IL-35(Interleukin 35) ELISA Kit
	E-EL-H0050	Human IP-10/CXCL10(Interferon Gamma Induced Protein 10kDa) ELISA Kit
	E-EL-H5200	Human LTF/LF(Lactoferrin) ELISA Kit



Research Areas	Cat. No.	Product Name
Immunology	E-EL-M0746	Mouse LTF/LF (Lactoferrin) ELISA Kit
	E-EL-H6005	Human MCP-1 (Monocyte Chemotactic Protein 1) ELISA Kit
	E-EL-M3001	Mouse MCP-1 (Monocyte Chemotactic Protein 1) ELISA Kit
	E-EL-R0633	Rat MCP-1 (Monocyte Chemotactic Protein 1) ELISA Kit
	E-EL-H1347	Human OPN (Osteopontin) ELISA Kit
	E-EL-H1492	Human PCT (Procalcitonin) ELISA Kit
	E-EL-H2183	Human SAA (Serum Amyloid A) ELISA Kit
	E-EL-H2376	Human sC5b-9 (Soluble Terminal Complement Complex C5b-9) ELISA Kit
	E-EL-H0052	Human SDF-1/CXCL12 (Stromal Cell Derived Factor 1) ELISA Kit
	E-EL-H1275	Human sIgA (Secretory Immunoglobulin A) ELISA Kit
	E-EL-M1040	Mouse sIgA (Secretory Immunoglobulin A) ELISA Kit
	E-EL-H0109	Human TNF- α (Tumor Necrosis Factor Alpha) ELISA Kit
	E-EL-M3063	Mouse TNF- α (Tumor Necrosis Factor Alpha) ELISA Kit
	E-EL-R2856	Rat TNF- α (Tumor Necrosis Factor Alpha) ELISA Kit
Neuroscience	E-EL-H0542	Human A β 1-40 (Amyloid Beta 1-40) ELISA Kit
	E-EL-H0543	Human A β 1-42 (Amyloid Beta 1-42) ELISA Kit
	E-EL-H0010	Human BDNF (Brain Derived Neurotrophic Factor) ELISA Kit
	E-EL-R1235	Rat BDNF (Brain Derived Neurotrophic Factor) ELISA Kit
	E-EL-0046	DA (Dopamine) ELISA Kit
	E-EL-H6093	Human GFAP (Glial Fibrillary Acidic Protein) ELISA Kit
	E-EL-H1205	Human NGF (Nerve Growth Factor) ELISA Kit
	E-EL-H1047	Human NSE (Neuron Specific Enolase) ELISA Kit
	E-EL-H6126	Human NT-proBNP (N-Terminal Pro-Brain Natriuretic Peptide) ELISA Kit
	E-EL-M0834	Mouse NT-proBNP (N-terminal pro-Brain Natriuretic Peptide) ELISA Kit
	E-EL-H0983	Human SNC α (Synuclein Alpha) ELISA Kit
	E-EL-0033	ST/5-HT (Serotonin/5-Hydroxytryptamine) ELISA Kit
Metabolism	E-EL-0028	8-OHdG(8-Hydroxydeoxyguanosine) ELISA Kit
	E-EL-0015	25-HVD3(25-Hydroxy Vitamin D3) ELISA Kit
	E-EL-0125	A-CoA(Acetyl Coenzyme A) ELISA Kit
	E-EL-H0137	Human ACTH(Adrenocorticotrophic Hormone) ELISA Kit
	E-EL-M0079	Mouse ACTH(Adrenocorticotrophic Hormone) ELISA Kit
	E-EL-R0048	Rat ACTH(Adrenocorticotrophic Hormone) ELISA Kit
	E-EL-H0698	Human CHEM(Chemerin) ELISA Kit



Research Areas	Cat. No.	Product Name
Metabolism	E-EL-H0835	Human CTX I (Cross Linked C-telopeptide of Type I Collagen) ELISA Kit
	E-EL-M3023	Mouse CTX I (Cross Linked C-telopeptide of Type I Collagen) ELISA Kit
	E-EL-0016	DHVD3 (1,25-Dihydroxyvitamin D3) ELISA Kit
	E-EL-0009	FA/VB9 (Folic Acid/Vitamin B9) ELISA Kit
	E-EL-H0386	Human FETUA (Fetuin A) ELISA Kit
	E-EL-H0074	Human FGF21 (Fibroblast Growth Factor 21) ELISA Kit
	E-EL-H1116	Human FGF23 (Fibroblast Growth Factor 23) ELISA Kit
	E-EL-M0511	Mouse FSH (Follicle Stimulating Hormone) ELISA Kit
	E-EL-R0391	Rat FSH (Follicle Stimulating Hormone) ELISA Kit
	E-EL-H0159	Human IFABP/FABP2 (Intestinal Fatty Acid Binding Protein) ELISA Kit
	E-EL-H2665	Human INS (Insulin) ELISA Kit
	E-EL-M1382	Mouse INS (Insulin) ELISA Kit
	E-EL-M2614	Mouse INS (Insulin) ELISA Kit
	E-EL-R3034	Rat INS (Insulin) ELISA Kit
	E-EL-H6029	Human KIM-1 (Kidney Injury Molecule 1) ELISA Kit
	E-EL-H6017	Human LEP(Leptin) ELISA Kit
	E-EL-M3008	Mouse LEP (Leptin) ELISA Kit
	E-EL-R0582	Rat LEP (Leptin) ELISA Kit
	E-EL-M0792	Mouse MAU (Microalbuminuria) ELISA Kit
	E-EL-H2016	Human MT (Melatonin) ELISA Kit
	E-EL-M0788	Mouse MT (Melatonin) ELISA Kit
	E-EL-R0031	Rat MT (Melatonin) ELISA Kit
	E-EL-M0828	Mouse NGAL (Neutrophil Gelatinase Associated Lipocalin) ELISA Kit
	E-EL-H1341	Human OPG (Osteoprotegerin) ELISA Kit
	E-EL-H6021	Human OxLDL (Oxidized Low Density Lipoprotein) ELISA Kit
	E-EL-H1213	Human RETN (Resistin) ELISA Kit
	E-EL-H6085	Human sTfR1 (Soluble Transferrin Receptor 1) ELISA Kit
	E-EL-R0976	Rat TSH (Thyroid Stimulating Hormone) ELISA Kit
	E-EL-H1763	Human VF(Visfatin) ELISA Kit
Signal Transduction	E-EL-0070	ALD(Aldosterone) ELISA Kit
	E-EL-H2357	Human CALP(Calprotectin) ELISA Kit
	E-EL-0056	cAMP(Cyclic adenosine monophosphate) ELISA Kit
	E-EL-M0325	Mouse COL1(Collagen Type I) ELISA Kit



Research Areas	Cat. No.	Product Name
Signal Transduction	E-EL-H0869	Human COL1 α 1 (Collagen Type I Alpha 1) ELISA Kit
	E-EL-H0781	Human COL7 (Collagen Type I) ELISA Kit
	E-EL-0161	Mouse CORT (Corticosterone) ELISA Kit
	E-EL-0160	Rat/Chicken CORT (Corticosterone) ELISA Kit
	E-EL-0157	Human Cortisol ELISA Kit
	E-EL-0079	fT3 (Free Triiodothyronine) ELISA Kit
	E-EL-0122	fT4 (Free Thyroxine) ELISA Kit
	E-EL-H0084	Human HGF (Hepatocyte Growth Factor) ELISA Kit
	E-EL-H0313	Human INHB (Inhibin B) ELISA Kit
	E-EL-M3053	Mouse LH (Luteinizing Hormone) ELISA Kit
	E-EL-R0026	Rat LH (Luteinizing Hormone) ELISA Kit
	E-EL-H1343	Human OC/BGP (Osteocalcin) ELISA Kit
	E-EL-M0864	Mouse OC/BGP (Osteocalcin) ELISA Kit
	E-EL-H0185	Human PI NP (Procollagen I N-Terminal Propeptide) ELISA Kit
	E-EL-M0233	Mouse PI NP (Procollagen I N-Terminal Propeptide) ELISA Kit
	E-EL-H0183	Human PI NP (N-Terminal Procollagen III Propeptide) ELISA Kit
	E-EL-0154	Pg (Progesterone) ELISA Kit
	E-EL-H1558	Human Rac1 (Ras Related C3 Botulinum Toxin Substrate 1) ELISA Kit
	E-EL-H1266	Human SP-A1 (Pulmonary surfactant-associated protein A1) ELISA Kit
Developmental Biology	E-EL-H6042	Human bFGF/FGF2 (Basic Fibroblast Growth Factor) ELISA Kit
	E-EL-0031	DHT (Dihydrotestosterone) ELISA Kit
	E-EL-0150	Human/Monkey/Mouse E2 (Estradiol) ELISA Kit
	E-EL-0152	Rat/Porcine E2 (Estradiol) ELISA Kit
	E-EL-H0177	Human GH (Growth Hormone) ELISA Kit
	E-EL-H0086	Human IGF-1 (Insulin-like Growth Factor 1) ELISA Kit
	E-EL-R3001	Rat IGF-1 (Insulin-like Growth Factor 1) ELISA Kit
	E-EL-R3006	Rat PRL (Prolactin) ELISA Kit
	E-EL-0155	T (Testosterone) ELISA Kit
Microbiology	E-EL-H0996	Human DEF β 2/DEFB2 (Defensin Beta 2) ELISA Kit
	E-EL-H6080	Human HBsAg (Hepatitis B surface antigen) ELISA Kit
	E-EL-H2438	Human LL-37 (Antibacterial Protein LL-37) ELISA Kit



Research Areas	Cat. No.	Product Name
Cell Biology	E-EL-H0059	Human EGF(Epidermal Growth Factor) ELISA Kit
	E-EL-H0179	Human FN(Fibronectin) ELISA Kit
	E-EL-H1470	Human GAL3(Galectin 3) ELISA Kit
	E-EL-H0080	Human GDF15(Growth Differentiation Factor 15) ELISA Kit
	E-EL-H6114	Human ICAM-1/CD54(intercellular adhesion molecule 1) ELISA Kit
	E-EL-H2104	Human PAI1(Plasminogen Activator Inhibitor 1) ELISA Kit
	E-EL-H5587	Human VCAM-1/CD106(Vascular Cell Adhesion Molecule 1) ELISA Kit
Stem Cells	E-EL-H1297	Human S100B(S100 Calcium Binding Protein B) ELISA Kit
	E-EL-0162	TGF- β 1(Transforming Growth Factor Beta 1) ELISA Kit
Epigenetics and Nuclear Signaling	E-EL-H6066	Human HIF-1 α (Hypoxia Inducible Factor 1 Alpha) ELISA Kit
	E-EL-H1554	Human HMGB-1(High Mobility Group Protein B1) ELISA Kit
	E-EL-M0676	Mouse HMGB-1(High Mobility Group Protein B1) ELISA Kit
	E-EL-H2199	Human PAF(Platelet Activating Factor) ELISA Kit
Tags and Cell Markers	E-EL-H1557	Human ESM1(Endothelial Cell Specific Molecule 1) ELISA Kit



ELISA Kit Validation Report

Product tested: Human AREG (Amphiregulin) ELISA Kit, 96 T

Objective: The aim of this experiment was to set up and validate the newly acquired Human AREG ELISA kit, optimize the working dilution range for our samples, and preliminarily assess the release of AREG into the culture medium under different conditions. This was motivated by previous qPCR data indicating AREG gene expression in our cell lines.

Experimental design:

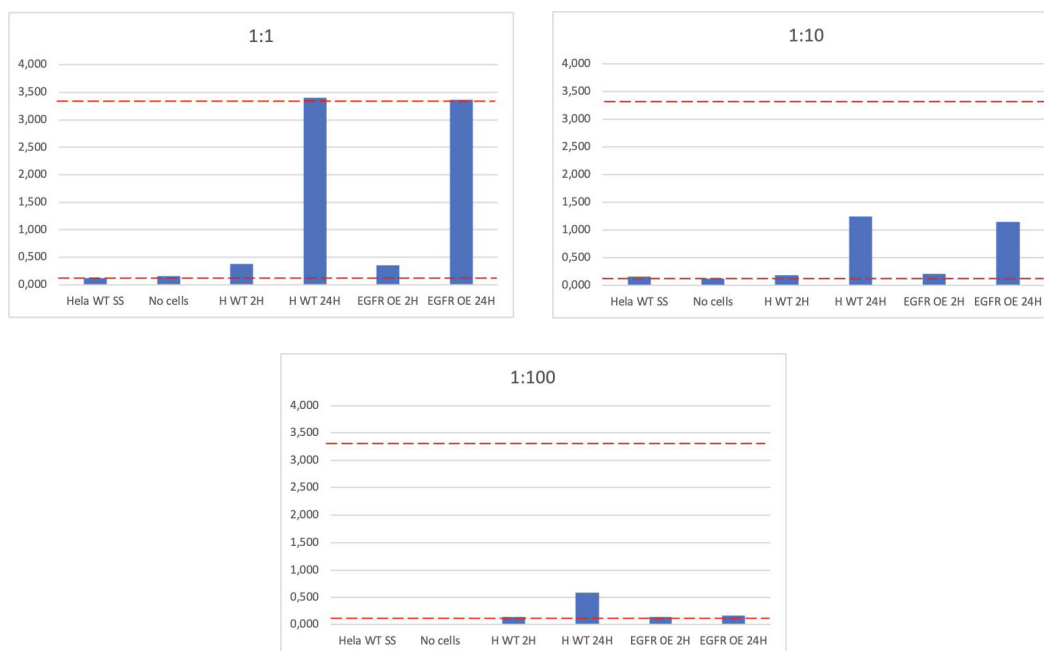
Conditioned media were collected from different experimental conditions:

- **Starvation only (SS):** Cells incubated in starvation medium.
- **SS no cells:** Starvation medium that was never conditioned with cells, used as negative control.
- **HeLa WT:** Wild-type HeLa cells stimulated with EGF (1 ng/ml) for 2h or 24h.
- **HeLa EGFR OE:** HeLa cells overexpressing EGFR stimulated with EGF (1 ng/ml) for 2h or 24h.

To determine the appropriate working range, three sample dilutions (1:1, 1:10, and 1:100) were tested, as baseline levels of AREG in supernatants were unknown.



Results:



- The dilution curves indicate that the **1:10 dilution is optimal**, placing the signal within the dynamic range of the standard curve while avoiding both the upper detection limit (upper red dashed line) and background noise (lower red dashed line).
- The kit performed reliably, providing consistent absorbance readings across dilutions.
- AREG was clearly detectable in the supernatants of EGF-stimulated cells, particularly in EGFR-overexpressing cells, consistent with mRNA upregulation.
- No significant signal was observed in the unconditioned starvation medium (SS no cells), **confirming assay specificity**.

This preliminary test demonstrates that the kit is suitable for quantifying secreted AREG in our system and will be used for future experiments.

Alexia Conte
Istituto Europeo di Oncologia

June 2025





www.microtech.eu

Sede Operativa
Traversa III Pisciarelli 18/a
80078 - Pozzuoli (NA)

Sede Legale
Viale Augusto 162,
80125 - Napoli (NA)

microtech@microtech.eu
microtech.srl@pec.it
+39 800 894 119

